



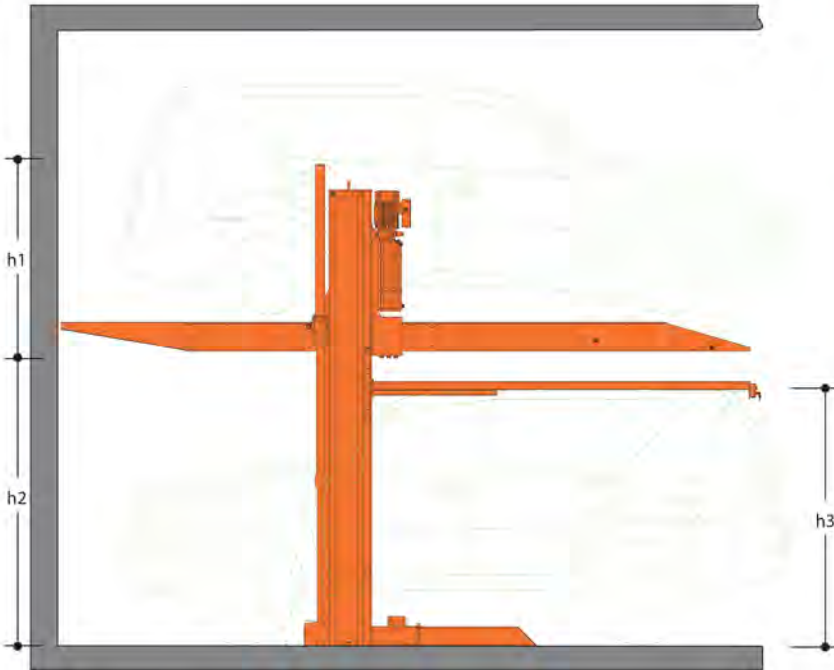
# Hydro-Park 1127

High-end Two Post Parking Lift



# Hydro-Park 1127

## Two Post Parking Lift 2 Levels



Hydro-Park	
h1(mm)	1408
h2(mm)	2100
h3(mm)	1865

### Introduction

Hydro-Park series of products are developed to provide customers more reliable, stable and usable parking equipments. A lot of new designs and components are updated, to make sure the products can work for much longer time with less maintenance.

Hydro-Park 1127 is the new Two Post Parking Lift. It's a kind of valet parking equipment, suitable for both commercial and residential parking purposes. It moves only vertically, so the users have to clear the ground level to get the higher level car down. It is hydraulic driven type that lifted directly by cylinders. The equipment can be used for both sedan & SUV.

- Commercial grade design
- Galvanized and corrugated platform guarantee safety and long lifetime
- Anti-slip corrugated deck protect both vehicle and driver from possible slip and damage but still high-heel shoe friendly
- Dual hydraulic lifting cylinders direct drive
- The pole with piston is chroming to anti-corrode to ensure its long using life
- Individual hydraulic power pack and control panel
- Self-standing and self-support structure
- Symmetrical designed column
- Can be relocated
- Special designed control arm for operator to control the lift without getting under the platform
- Synchronization chain assuring the lifting platform balance
- 2700kg and 2300kg capacity for different demands
- Middle post sharing feature save cost and space
- Electric key switch for security and safety
- Automatic shut-off if operator releases the key switch
- Dynamic mechanical locks as anti-falling device hold the platform in place
- Manual lock release available in case electricity failure
- Platform can be stopped at different heights to fit for various vehicles and ceiling heights
- Hydraulic overloading protection

### General Parts



- 1 Carriage
- 2 Transparent oil tank
- 3 Oil drip tray (optional)
- 4 Galvanized cover plate
- 5 Electric box
- 6 Oil pipe protector
- 7 Key switch & emergency stop button
- 8 Dynamic lock
- 9 Front & Back footage

## Advantages



### 1 Low usage cost

When the platform moves down, it will be driven by gravity, so there is no electricity consumption for hydraulic power pack.

### 2 Fast and easy installation

With professional design and friendly package, it becomes simple on installation. What's more, detailed installation manual, drawing and video attached with products will help customers have easier installation work.

### 3 Sharing post feature

The posts could be shared when they are installed side by side, which can save cost, land space, and container space.

### 4 Professional packing & delivery

We have very professional packaging and logistic people to ensure our customer will get the product damage free, simple load & unload in time.

### 5 Hydraulic driving mode

Thanks to the hydraulic driving mode, our lift could have a faster lifting speed. Even though there is power failure, the upper car still can be retrieved by manually operating the solenoid valve.

### 6 Dynamic locking device

We are offering the safest parking machine in the market, the equipment is built under the CE standard and there are more than 10 safety features to ensure our clients will always get protection. Especially, there are a range of locking tabs on the posts to protect cars from accident damage.

### 7 Stronger structure

Hydro-Park 1127 enforced the critical parts that carry the weight makes the equipment extra strong.

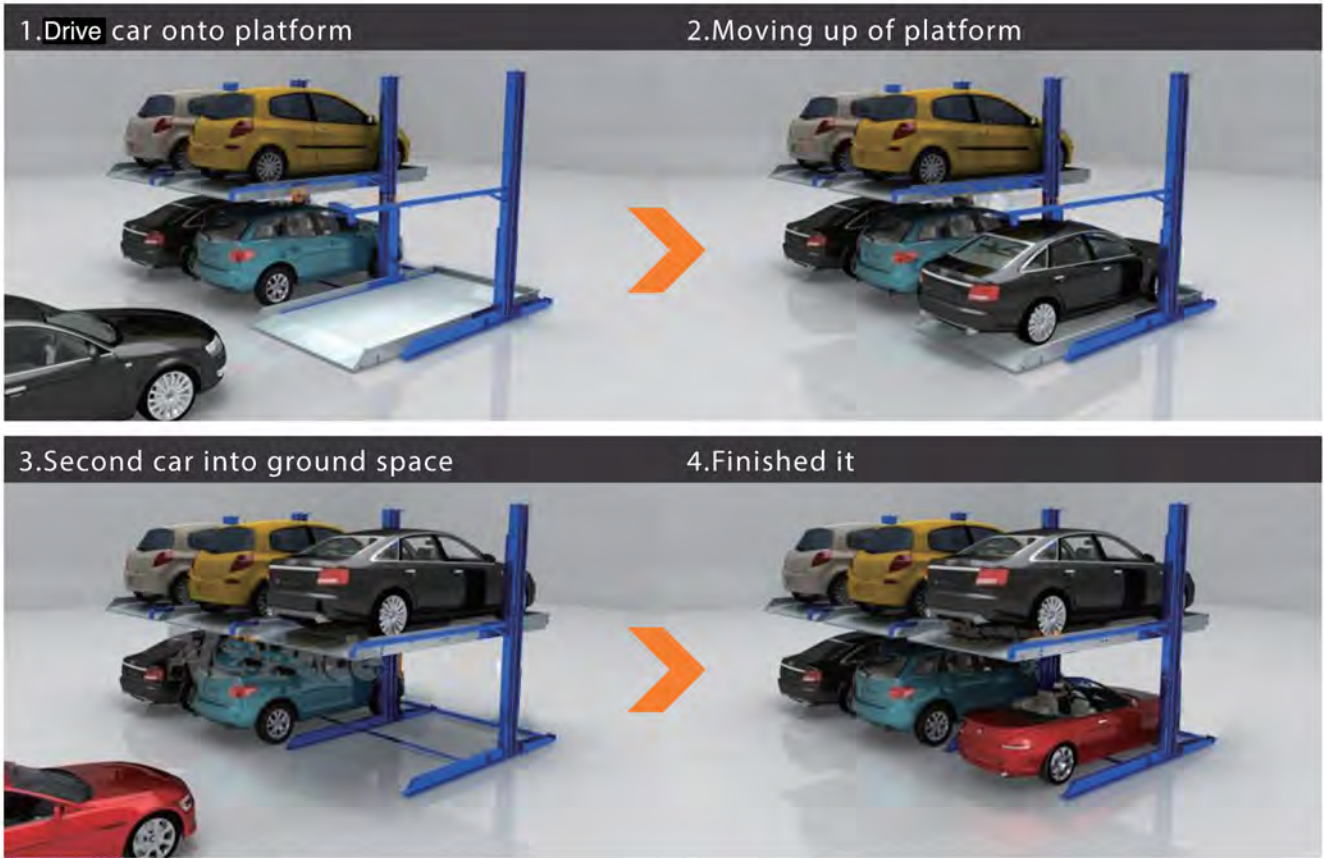


## Specifications

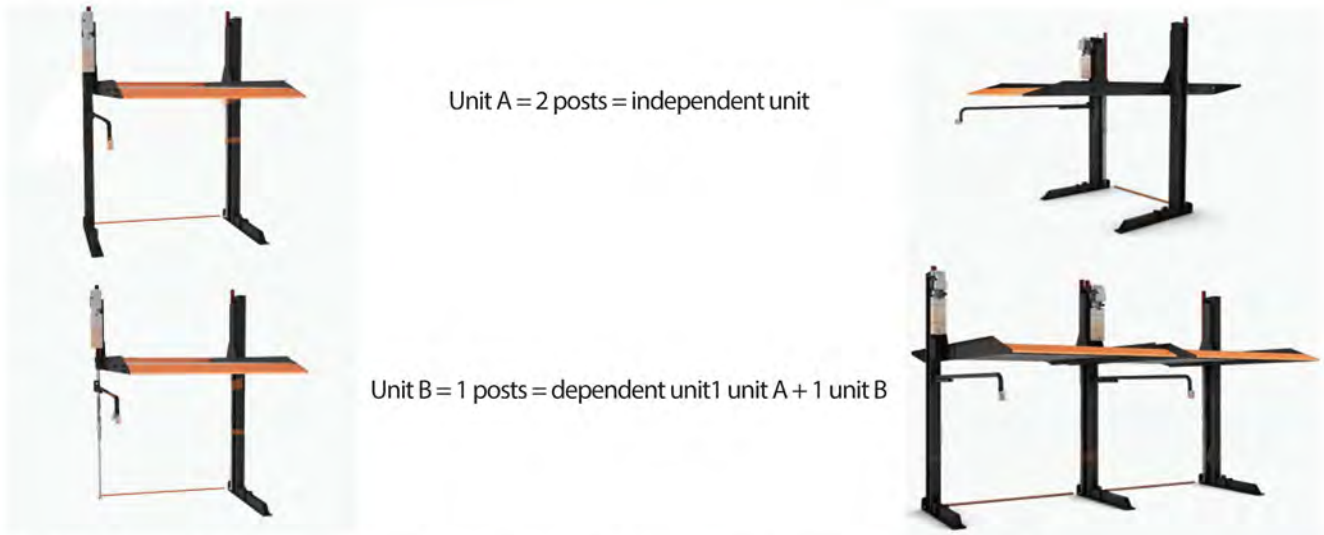
Model	Hydro-Park 1127
Lifting capacity	2700kg
Equipment weight	1100kg
Lifting height	2100mm
Usable platform width	2100mm
Electrical required	220-420V, 1 or 3Phase, 50/60Hz *Price maybe different!
Control power	24V
Lock device	Dynamic
Lock release	Electric auto release
Operation	Key switch
Power pack	2.2 kw hydraulic power pump
Lifting/lowing time	50/45 Sec.
Finishing	Powder coating

# Operation

Hydro-Park 1127 is a kind of valet parking, it means people need get the bottom car out first then can retrieve the top car if both two cars are parked



# Sharing Post Feature

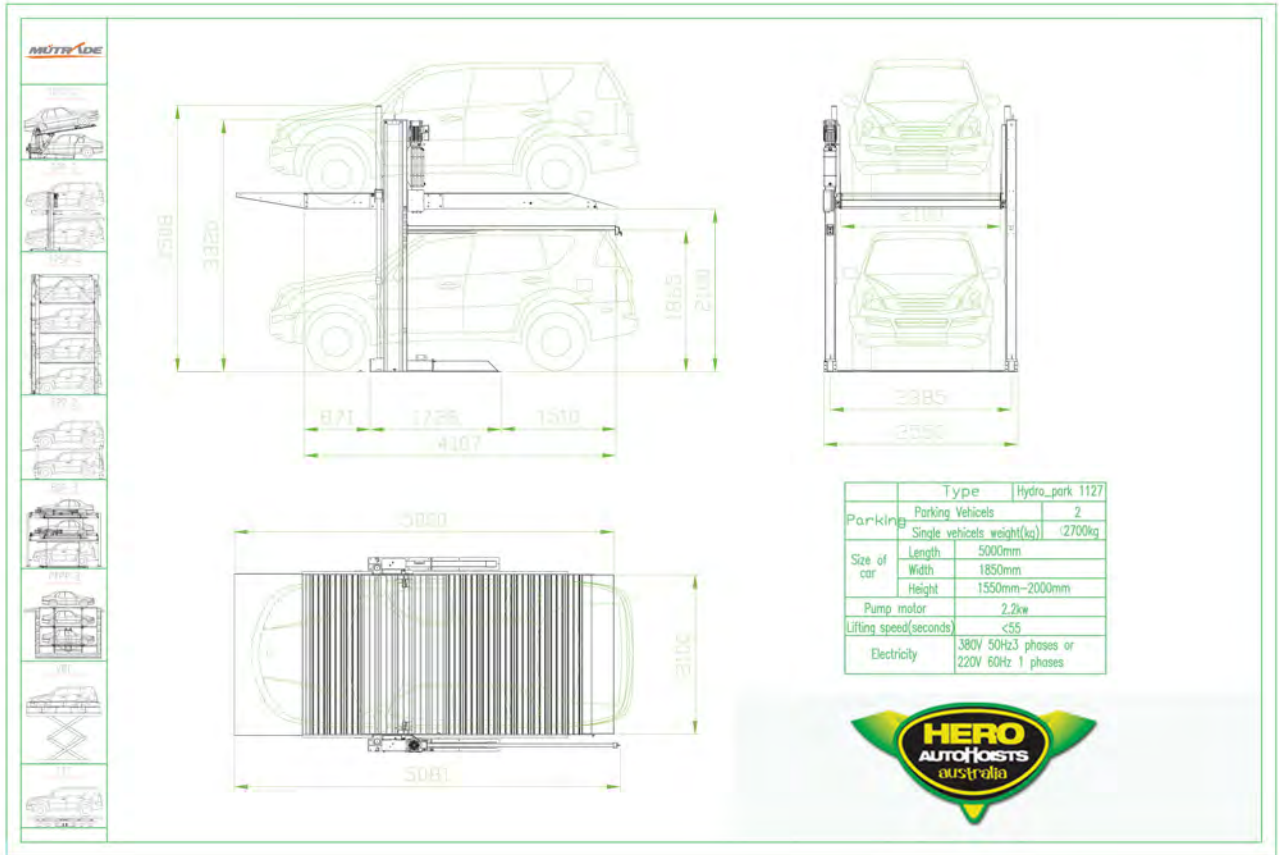


With the unique design of the Hydro-Park 1127 sharing features, we are providing you following advantages:

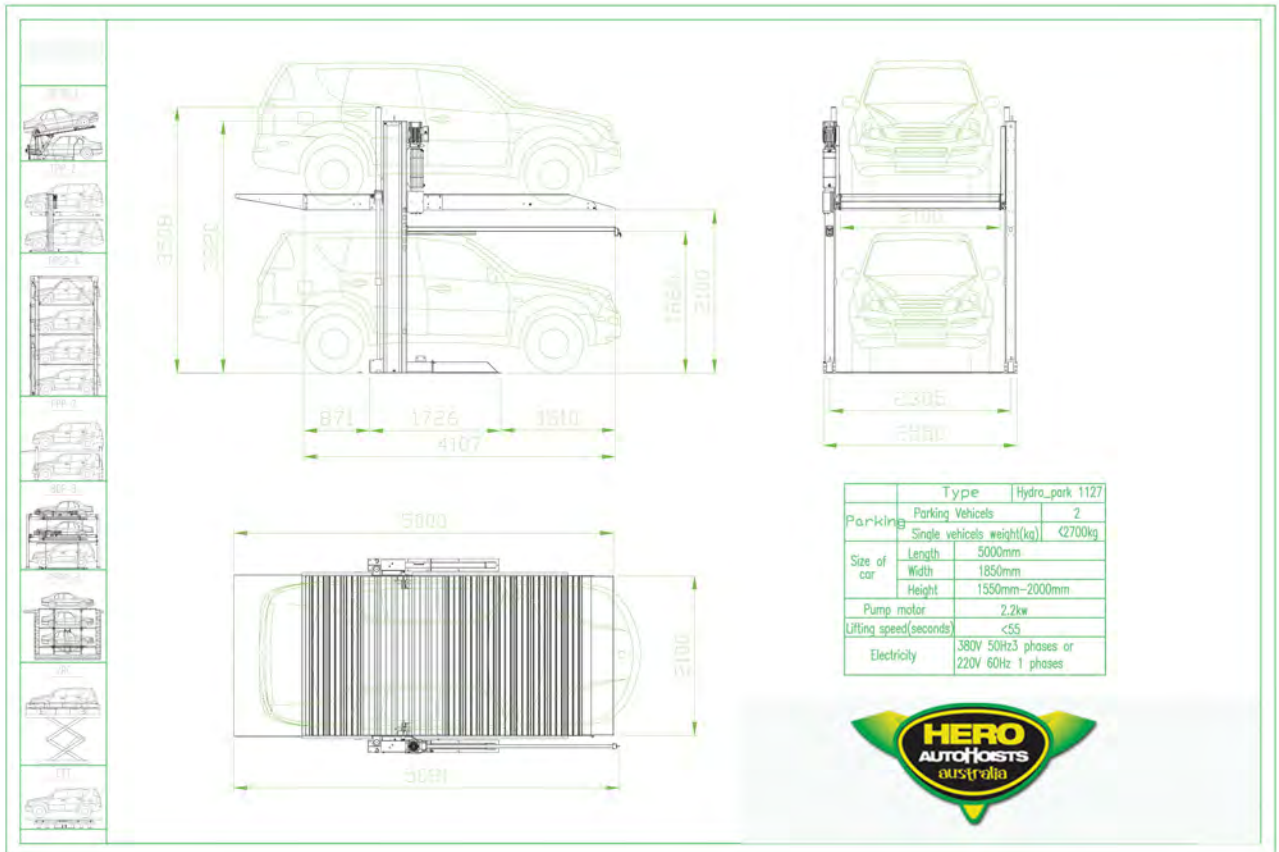
- Less overhead cost
- Less width required
- Less installation job needed
- Less delivery cost
- Stronger structure



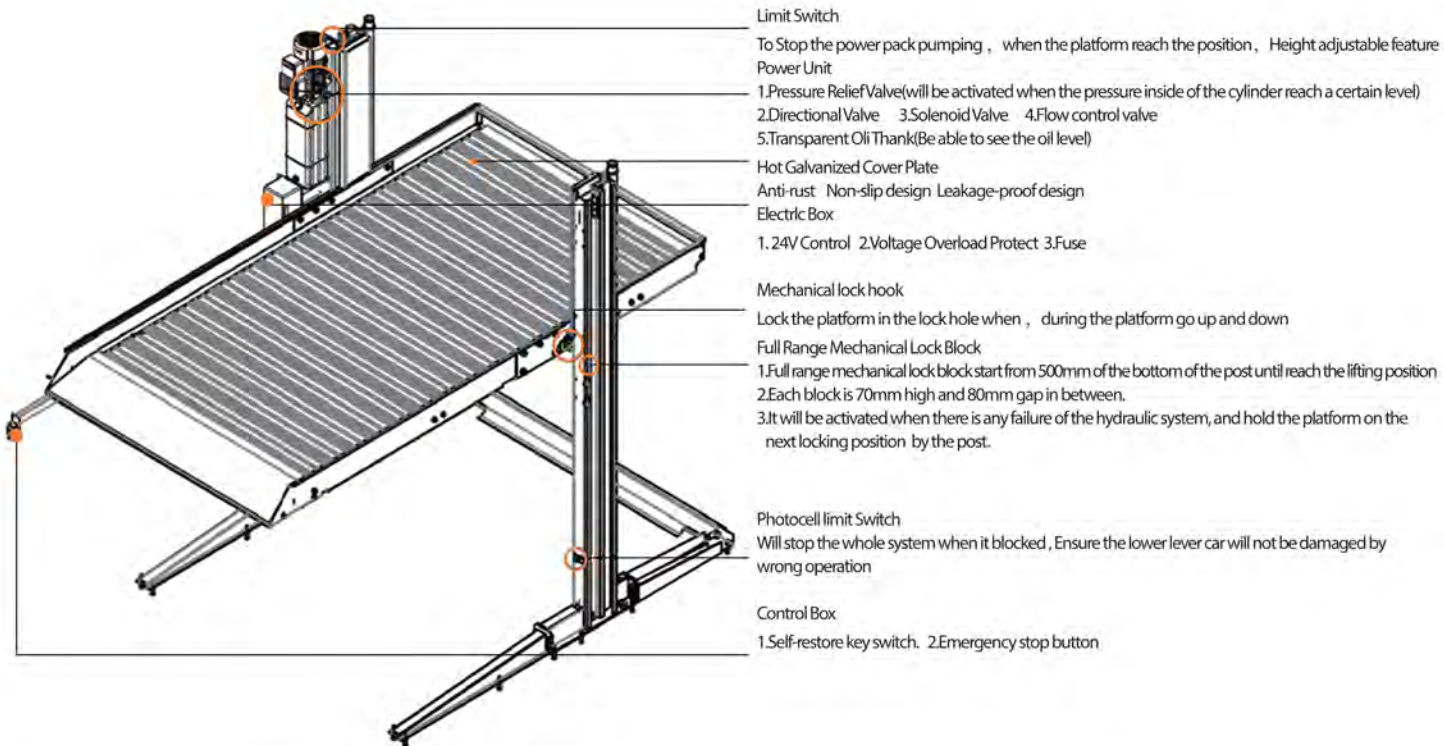
Head In



Back In



## Safety Features



- "All the way" 6 mechanical safety lock every 10cm
- 24v electric lock release ( no harm for operator)
- Photocell sensor available to check under car and avoid trespass.
- Electric protection for power over load or under voltage.
- Auto locking system for power cut as safety features.
- Emergency stop button.
- Pressure relief valve and pressure compensate flow control valve to triple ensure safety.
- Limited switch in the top of the post ( when the platform go to the appointed height, it will automatic stopped to avoid the wrong operation )
- Photocell switch installed in the post of 50 cm above the ground (when a child pass, this photocell is blocked, then the whole equipment is stopped to avoid harming children )
- Italian hydraulic seal to ensure the total quality of Hydraulic cylinder
- Overload protection device for hydraulic power pack
- Besides the synchronization chain ( 5 times than weight capacity ), Platform pull-rod double ensure its balance.

## Mechanical Anti-falling Locking



- Dynamic locking device  
With 6 locking tabs



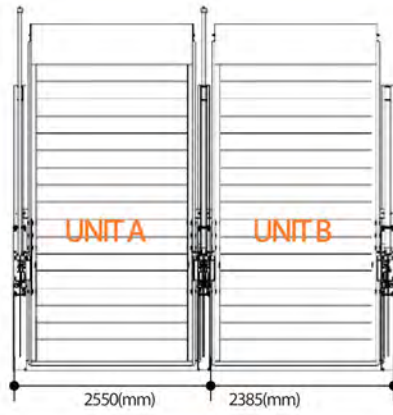
- Electromagnet



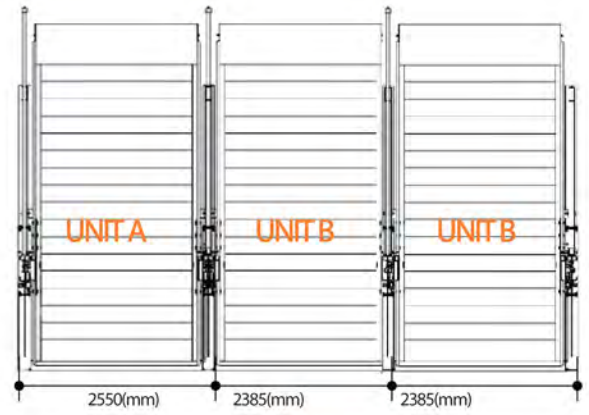
## Width calculation



2550



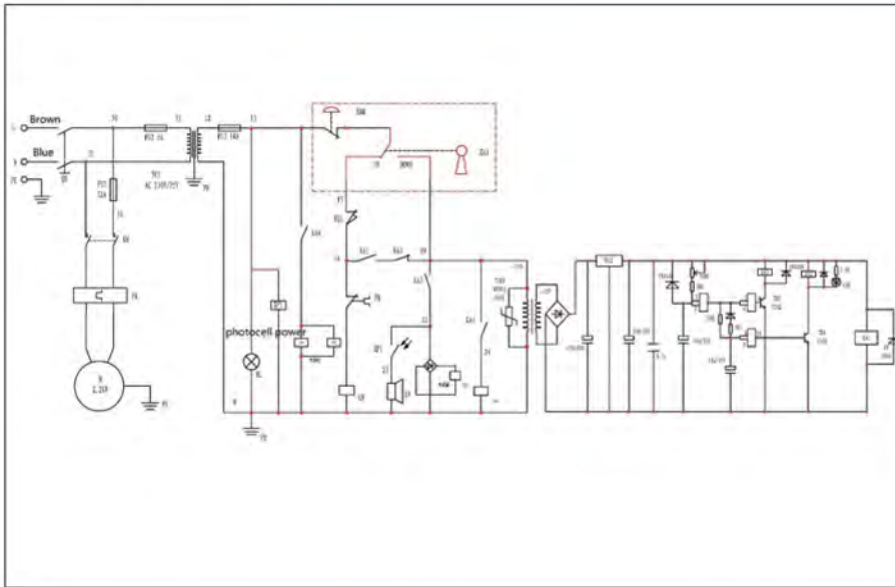
4935



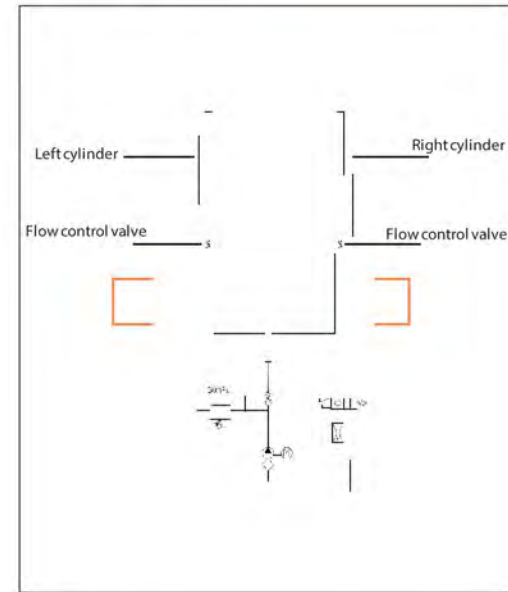
7320

## Electrical & hydraulic diagram

Electrical diagram (24V)



Hydraulic diagram



## Packaging & container loading



## Surface Finishing



Models	Hydro-Park 1127
Unit A in 20ft	7 unit
Unit A in 40ft	18unit
Unit B in 20ft	9 unit
Unit B in 40ft	24unit

Powder coating is applied as a free-flowing, dry powder. It is typically applied electrostatically and is then cured under heat to allow it to flow and form a "skin". It is usually used to create a hard finish that is tougher than conventional paint.